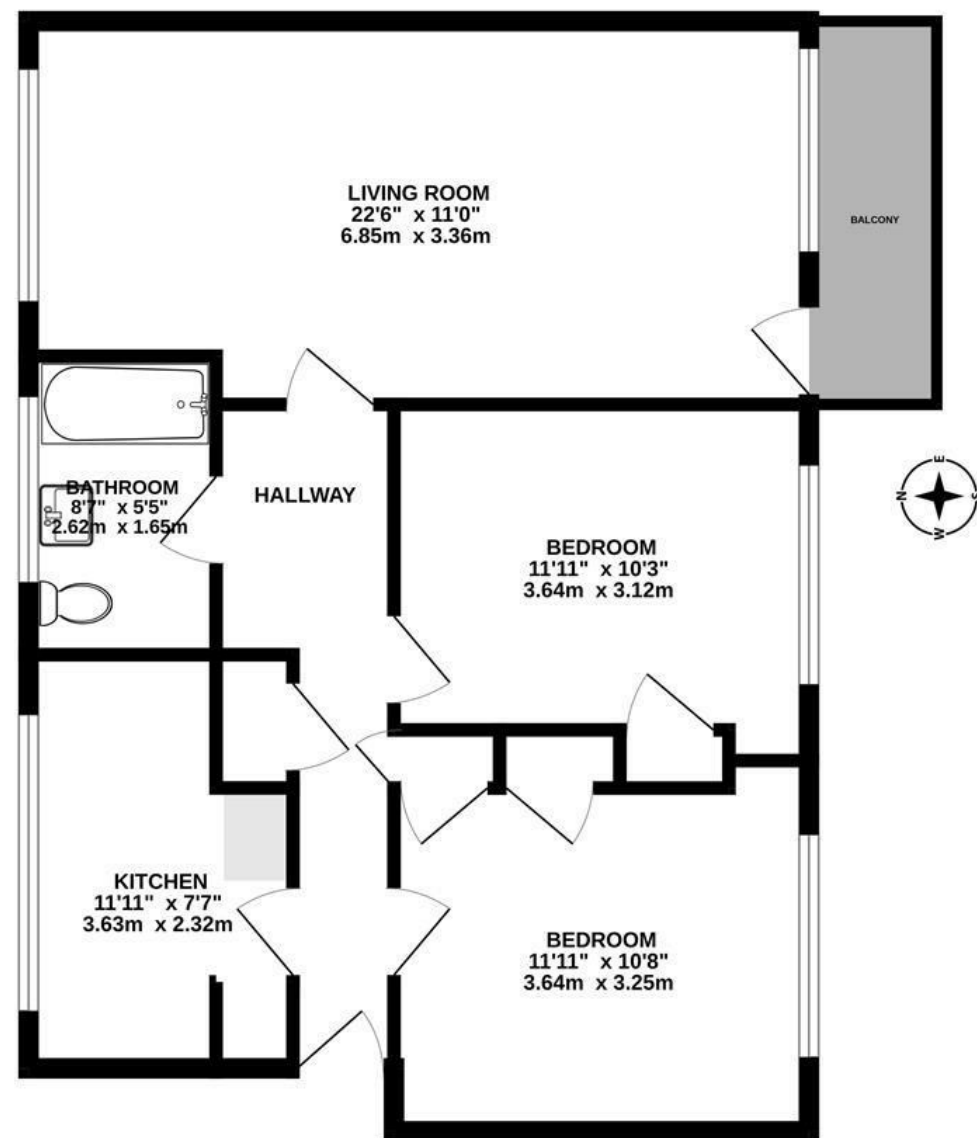
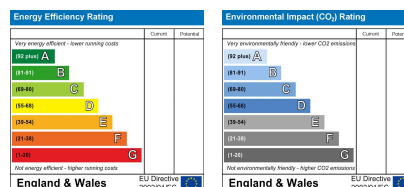


TOP FLOOR
698 sq.ft. (64.8 sq.m.) approx.



TOTAL FLOOR AREA : 698 sq.ft. (64.8 sq.m.) approx.
Plans for illustration purposes only. Intending purchasers should check measurements personally.
Made with Metropix ©2025




**BRITISH
PROPERTY
AWARDS**
2022
★★★★★
GOLD WINNER
PSP HOMES
SOUTH ENGLAND
(OVERALL)




25 Jireh Court, Haywards Heath, W Sussex, RH16 3BH

Guide Price £215,000 Leasehold - Share of Freehold

PSPhomes


Let's Get Social

 @psphomes  /psphomes www.psphomes.co.uk

VIEWING BY APPOINTMENT WITH PSP HOMES
3 Muster Green South, Haywards Heath, West Sussex, RH16 4AP. TELEPHONE 01444 416999

Much care is taken in the preparation of our particulars, but we cannot guarantee the information given is accurate.
Property details are issued a general guide only and may not form any part of an offer or contract. We recommend intending purchasers check details personally.

PSPhomes

 @psphomes

 /psphomes

www.psphomes.co.uk

25 Jireh Court, Haywards Heath, W Sussex, RH16 3BH

What we like...

- * Spacious room dimensions with lots of natural light.
- * Immaculate order having been renovated.
- * Two great size double bedrooms - both with fitted wardrobes.
- * Remainder of 999 year lease and share of the freehold.
- * Great location for the station and town centre.

The Flat...

This spacious top (second) floor apartment forms part of Jireh Court - an incredibly convenient block that is ideally positioned for the town centre, Waitrose Superstore, Haywards Heath's mainline station and The Broadway with its bars & restaurants.

The flat is offered for sale in excellent order with neutral décor, brand new carpets, a brand new kitchen, gas fired central heating and uPVC double glazing.

The accommodation is an excellent size and the open plan living room is a great size with plenty of room for sitting and dining areas. The dual aspect set up means you have plenty of natural light flooding in and the southerly balcony enjoys a pleasant leafy outlook.

Both bedrooms are doubles, each with fitted wardrobes and served by the bathroom.

Outside you have residents parking (non allocated). There is also the remainder of a 999 year lease with a portion of the freehold.

Offered with no chain, a swift move is possible.



The Location...

Jireh Court is a purpose built block of flats situated on Perrymount Road, within a short walk of mainline train station with its fast & regular commuter services to London (approx 47 mins to Victoria/London Bridge), Brighton and Gatwick International Airport. Waitrose is also nearby whilst the town's social hub, The Broadway is a couple of moments walk and boasts a selection of bars and restaurants including Cote Brasserie,, Zizzi, Pizza Express, Lockhart Tavern and Orange Square. Haywards Heath town centre with its extensive range of cafés, bars, restaurants and shops is also nearby. By car, surrounding areas can be easily accessed via the A23(M).

The Specifics....

Tenure: Leasehold with portion of freehold

Lease: Remainder of 999-year term, which began in 1959.

Maintenance: Approx £180 per month including buildings insurance

Ground Rent: £5 per annum

Council Tax Band: B

Managing Agents: Parson Son & Basley T: 01243 868600

We believe the above information to be accurate but recommend checking personally prior to exchange of contracts.

NB

Some photos are digitally furnished for marketing purposes.

